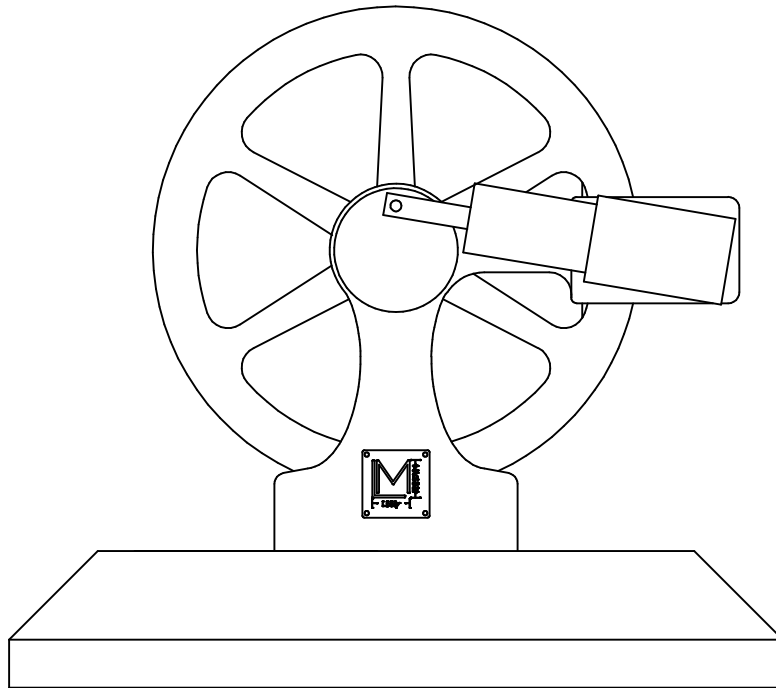


# Liney Machine

LINEY-1

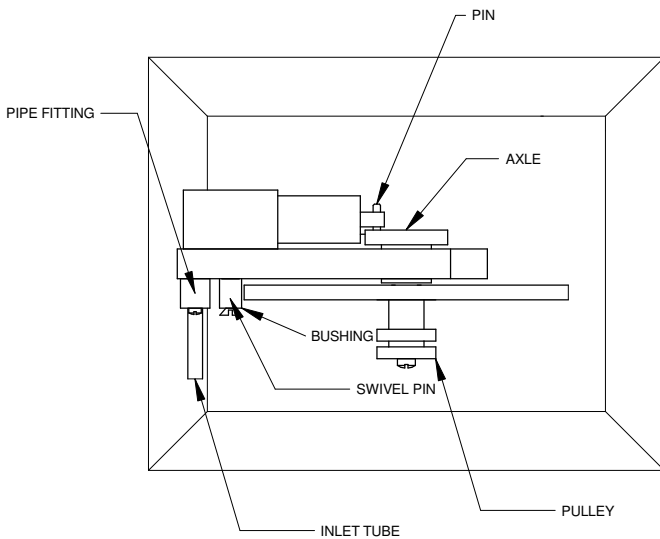
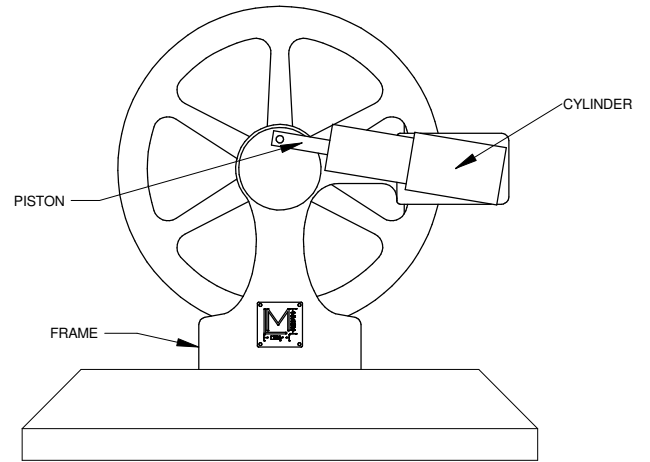
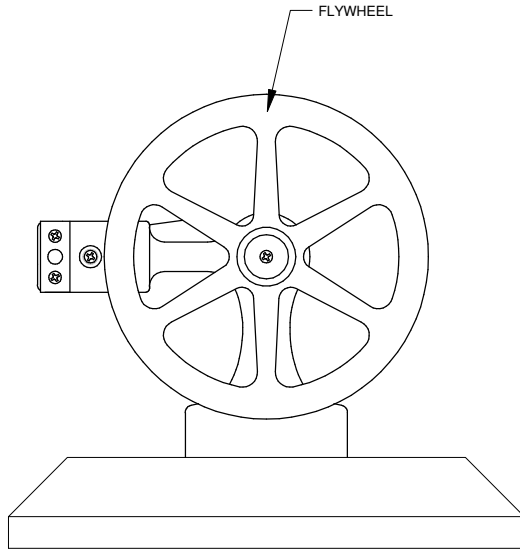
Edition 02-13-08



# Liney Machine

LINEY-1

Edition 02-13-08



## MATERIALS CHECK LIST

PART	SIZE	MATERIAL	LENGTH
FRAME	1.75 X .25	ALUM. BAR	3.25
AXLE	.75 DIA	BRASS RND	1.25
PISTON	.25 DIA	BRASS RND	1.5
CYLINDER	.5 X .5	BRASS SQR	1.75
PULLEY	.5 DIA	ALUM. RND	0.75
SWIVEL PIN	.125 DIA	BRASS RND	1.00
FLYWHEEL	2.00 DIA	BRASS RND	.300
PIPE FITTING	.25 X .25	BRASS SQR	.75
STEAM INLET PIPE	.125 OD	BRASS TUBE	1.5
FASTENERS			
WASHER	M3	STAINLESS	2 EA
BUSHING	.125 ID	BRASS TUBE	.5
DOWEL PIN	1/16 X 5/16	STEEL	1 EA
BEARINGS	.25 ID, .375 OD		2 EA
SCREWS, FLAT, CAP	2-56 X .25	SS	2 EA
SCREWS, SOCKET, CAP	2-56 X .375	SS	3 EA

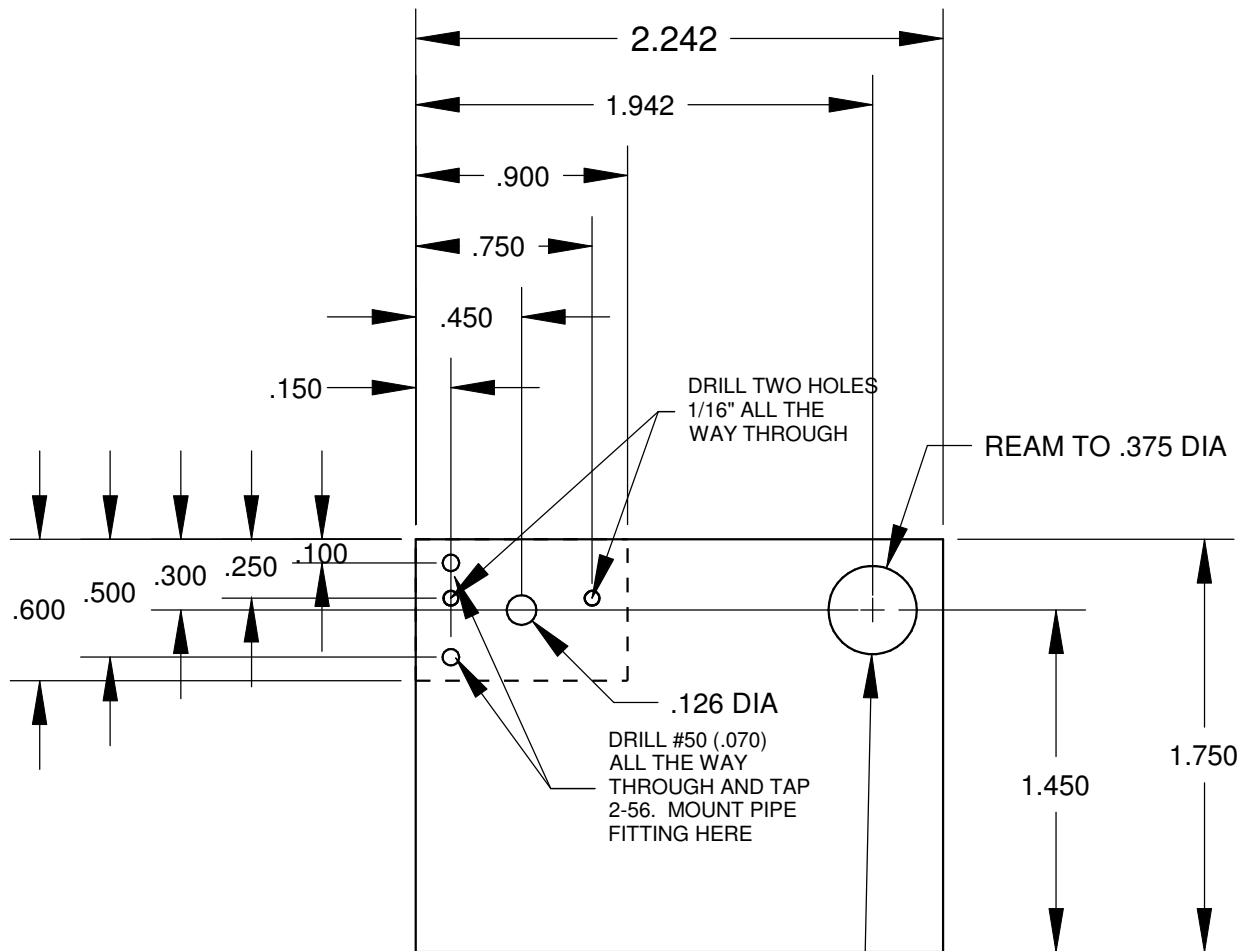
# Liney Machine

LINEY-1

Edition 02-13-08

FRAME

THE ENGINE FRAME IS MADE FROM .25 ALUMINUM PLATE AND CAN BE SHAPED AS DESIRED FOR A VARIETY OF APPEARANCES. THE ONLY PART THAT IS CRUCIAL FOR OPERATION IS THE POSITIONING OF THE HOLES AND ALLOWING CLEARANCE FOR THE FLYWHEEL OVER THE BASE. THE AREA INSIDE THE DOTTED LINE ACTS AS THE SEAL FOR THE VALVES AND SHOULD BE LEFT SOLID. LAP THIS AREA AS SMOOTH AND FLAT AS POSSIBLE. WE MOUNT THE FRAME TO THE BASE BY DRILLING AND TAPING 2-56 HOLES IN THE BOTTOM EDGE OF THE FRAME.



PRESS A FLANGED BEARING INTO EACH SIDE OF THIS HOLE

USE BOCA BEARING  
PART # FR168-ZZ AF2  
ID 0.2500  
OD 0.3750  
FLANGE OD 0.4219  
FLANGE WIDTH 0.0360

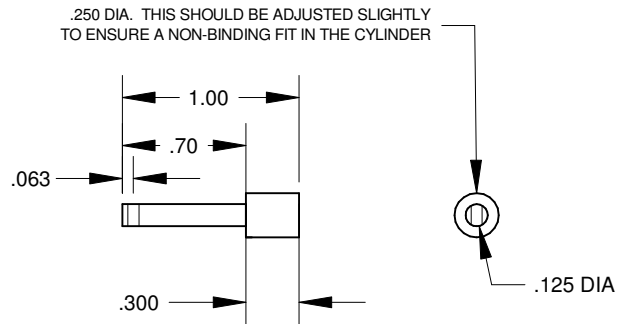
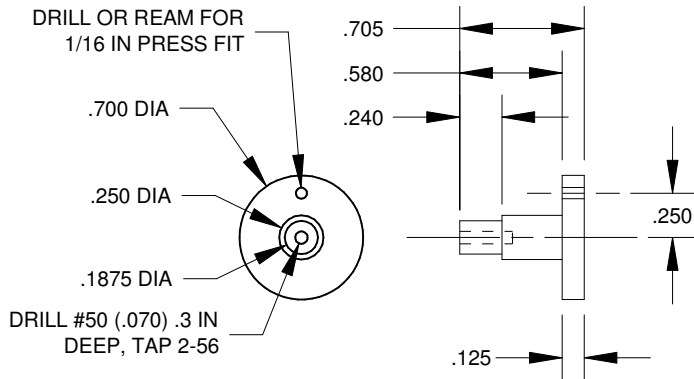
# Liney Machine

LINEY-1

Edition 02-13-08

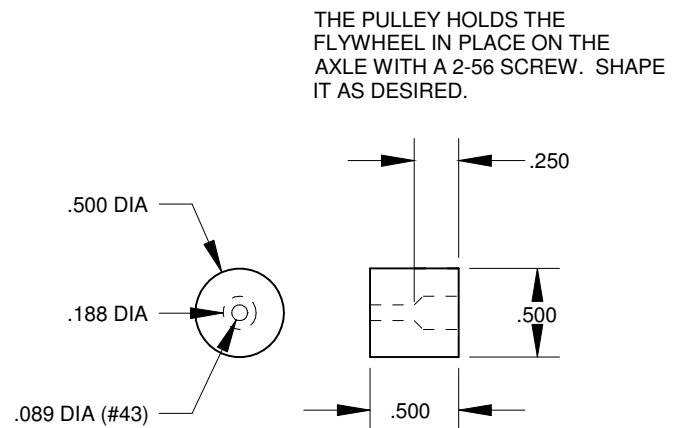
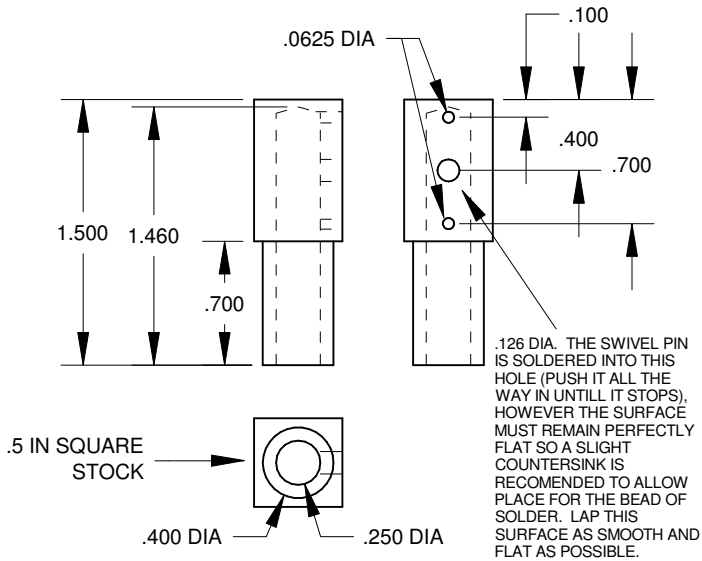
AXLE

PISTON



CYLINDER

PULLEY

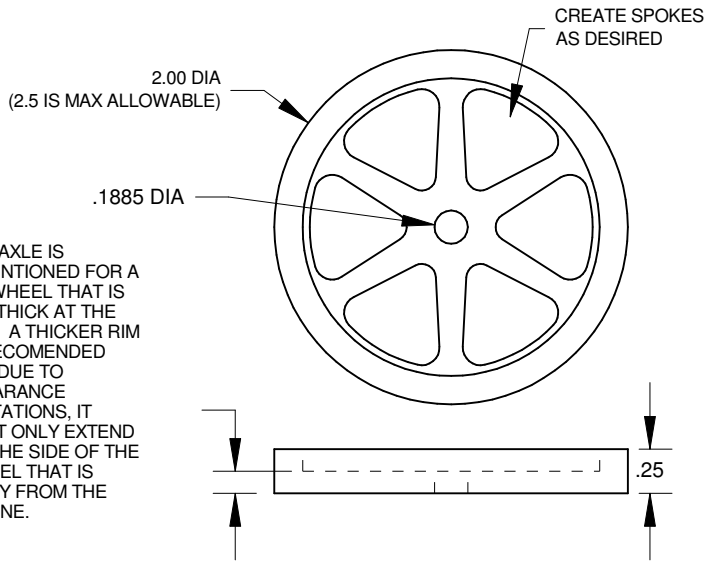


# Liney Machine

LINEY-1

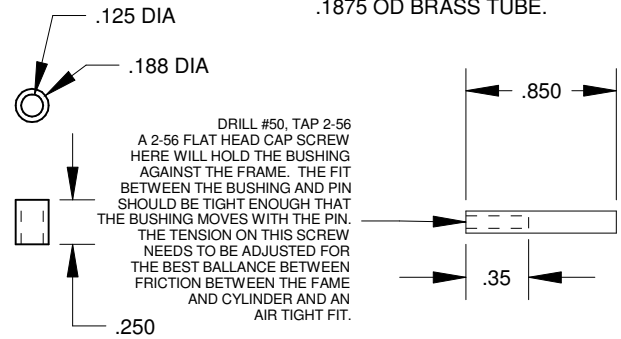
Edition 02-13-08

## FLYWHEEL



THE AXLE IS DIMENTIONED FOR A FLYWHEEL THAT IS .125 THICK AT THE HUB. A THICKER RIM IS RECOMENDED BUT DUE TO CLEARANCE LIMITATIONS, IT MUST ONLY EXTEND ON THE SIDE OF THE WHEEL THAT IS AWAY FROM THE ENGINE.

## SWIVEL PIN & BUSHING



THE SWIVEL PIN IS TURNED FROM .125 DIA BRASS ROUND STOCK. THE BUSHING IS TURNED FROM .1875 OD BRASS TUBE.

## PIPE FITTING

